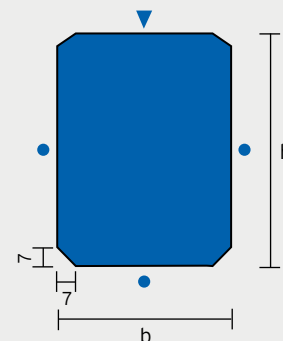




Vellingkantlateien

Standaard

| Vellingkantlateien | | | |
|--------------------|-----|-----|---------------------|
| Type | h | b | kg / m ¹ |
| VK 98x100 | 98 | 100 | 24 |
| VK 98x150 | 98 | 150 | 35 |
| VK 98x214 | 98 | 214 | 50 |
| VK 138x100 | 138 | 100 | 33 |
| VK 138x150 | 138 | 150 | 50 |
| VK 138x214 | 138 | 214 | 71 |
| VK 148x150 | 148 | 150 | 54 |
| VK 148x214 | 148 | 214 | 77 |
| VK 198x100 | 198 | 100 | 48 |
| VK 198x120 | 198 | 120 | 58 |
| VK 198x150 | 198 | 150 | 71 |
| VK 198x214 | 198 | 214 | 103 |
| VK 298x100 | 298 | 100 | 72 |
| VK 298x120 | 298 | 120 | 87 |
| VK 298x150 | 298 | 150 | 107 |
| VK 298x214 | 298 | 214 | 153 |



Vellingkantlateien zijn traditioneel gewapend. Berekening volgens constructeur / fabrikant.

